



Bioeconomy in the new Common Agricultural Policy 2021-2027



María Gafo – DG Agriculture and Rural Development
2018 Bioregions Forum - 13 November 2018

INDEX

1. Bioeconomy ... and the wider picture
2. What about our rural areas?
3. Bioeconomy in the future CAP



INDEX

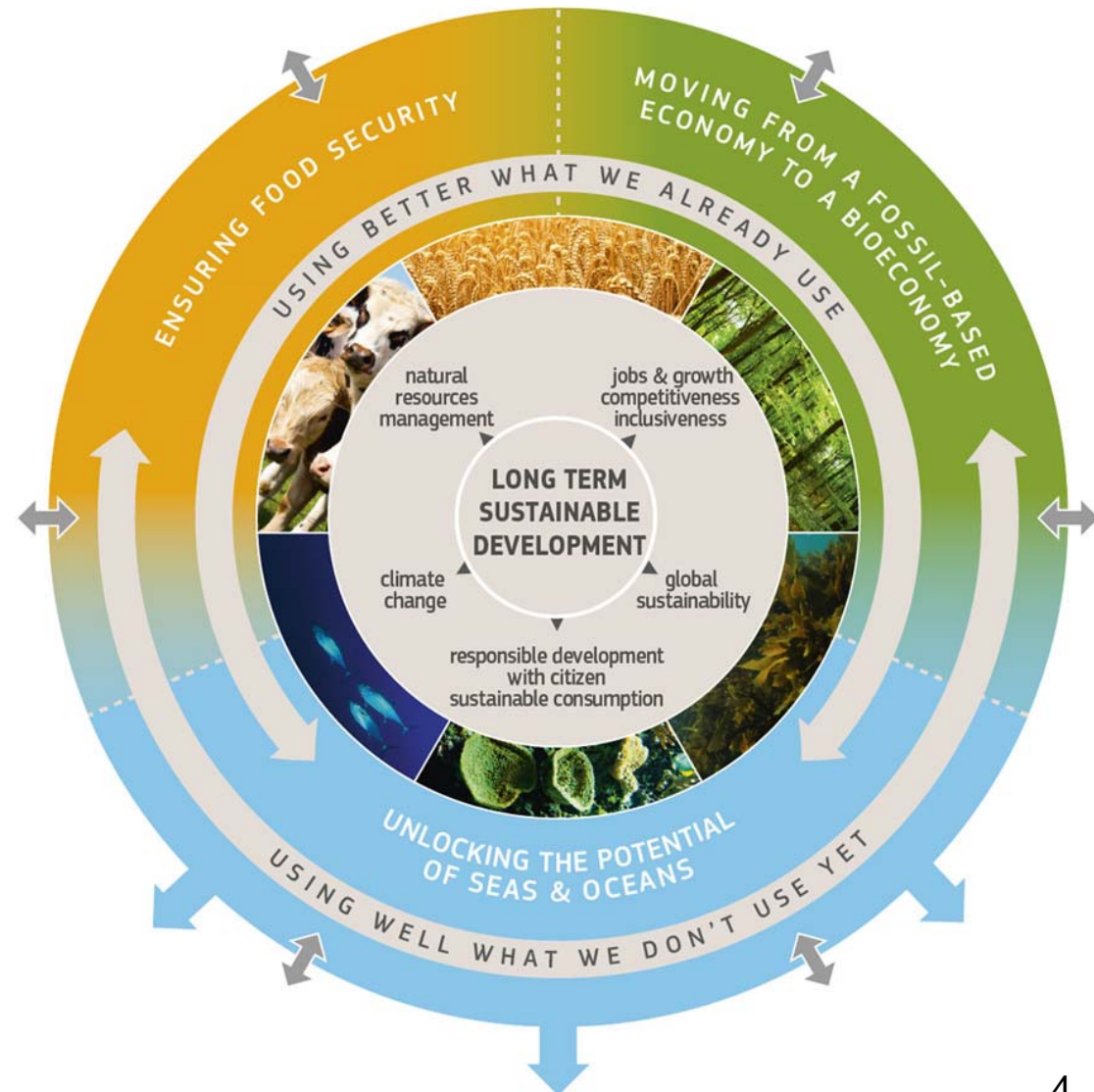
1. Bioeconomy ... and the wider picture
2. What about our rural areas?
3. Bioeconomy in the future CAP



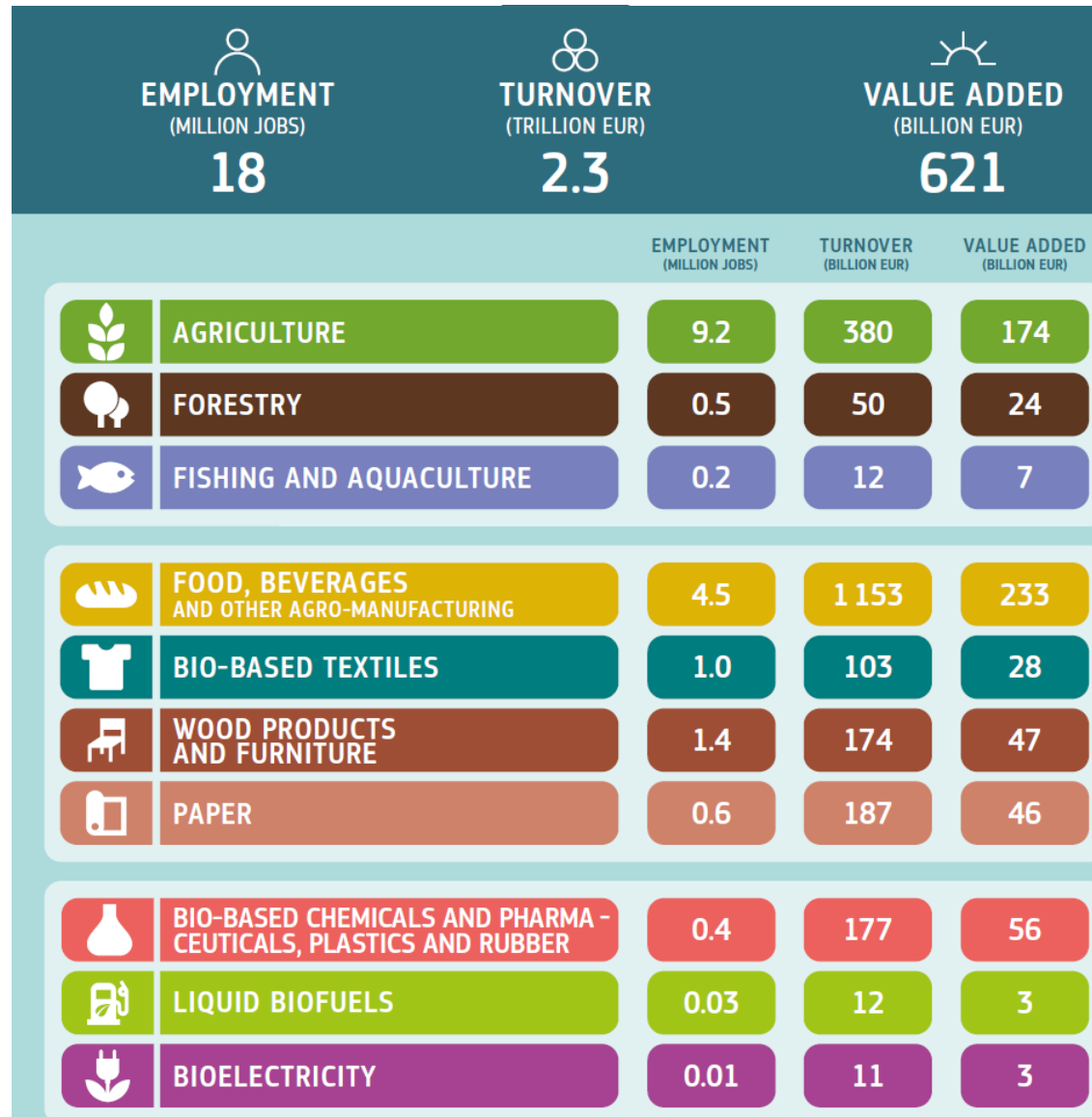
Bioeconomy...



The bioeconomy comprises those parts of the economy that use renewable biological resources from land and sea – such as crops, forests, fish, animals and micro-organisms – to produce food, materials and energy.



EU Bioeconomy



..and the wider picture



- ✓ Around 26 million tonnes of plastic waste generated in Europe every year.
- ✓ Landfilling and incineration rates of plastic waste remain high - 31 % and 39 %
- ✓ Demand for recycled plastics accounts for only 6 % of plastics demand in EU
- ✓ Plastics production and incineration of plastic waste give rise globally to approx. 400 million tonnes of CO₂ a year.

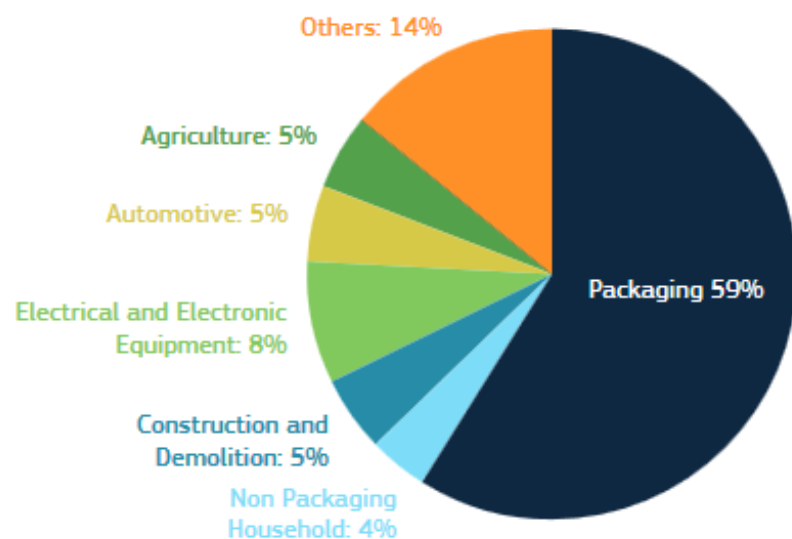
..and the wider picture



European
Commission



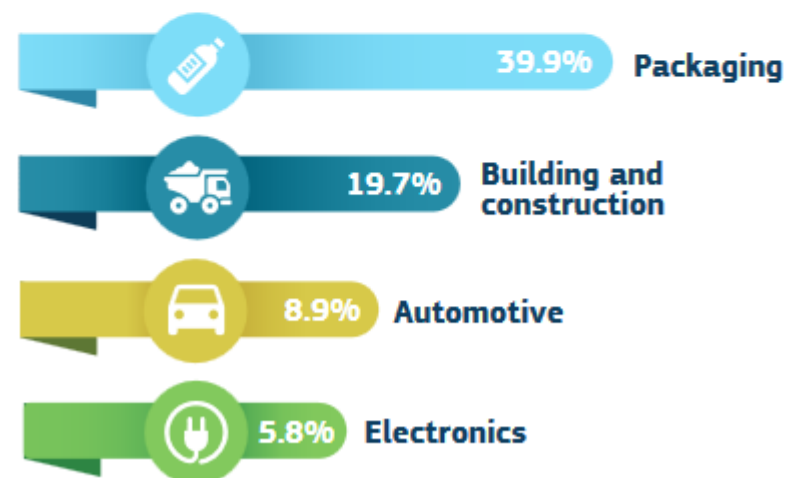
EU PLASTIC WASTE GENERATION IN 2015



Source: Eunomia (2017)

EUROPEAN PLASTICS DEMAND IN 2015

49 million tonnes



EU-28, Norway and Switzerland - Source: Plastics Europe (2016)

INDEX

1. Bioeconomy ... and the wider picture
2. What about our rural areas?
3. Bioeconomy in the future CAP



Social challenges of our rural areas



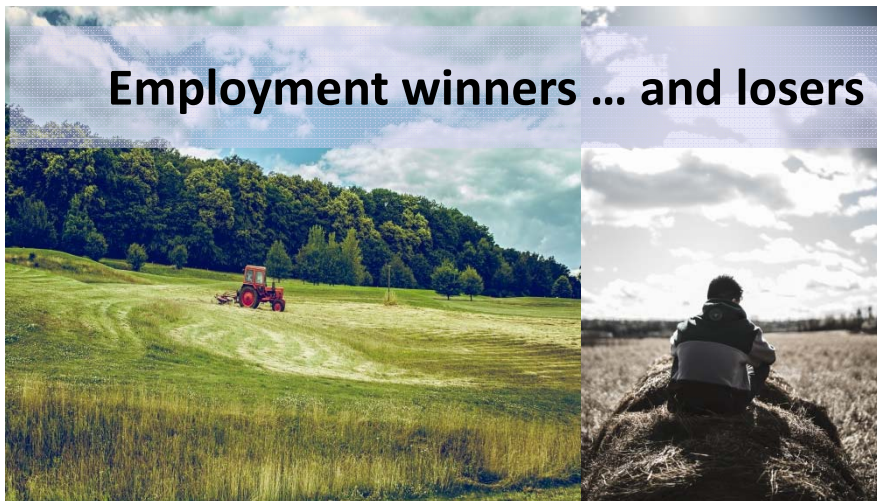
Depopulation and ageing



Risk of poverty and social exclusion



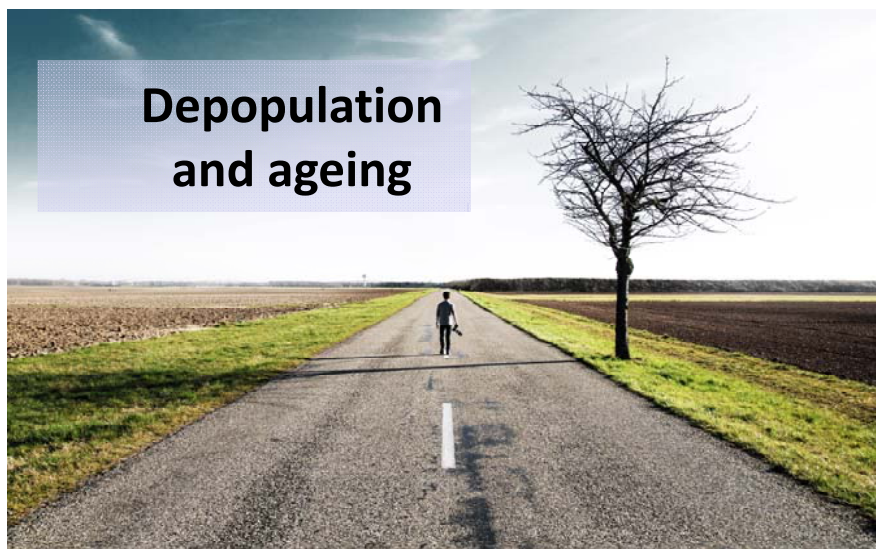
Employment winners ... and losers



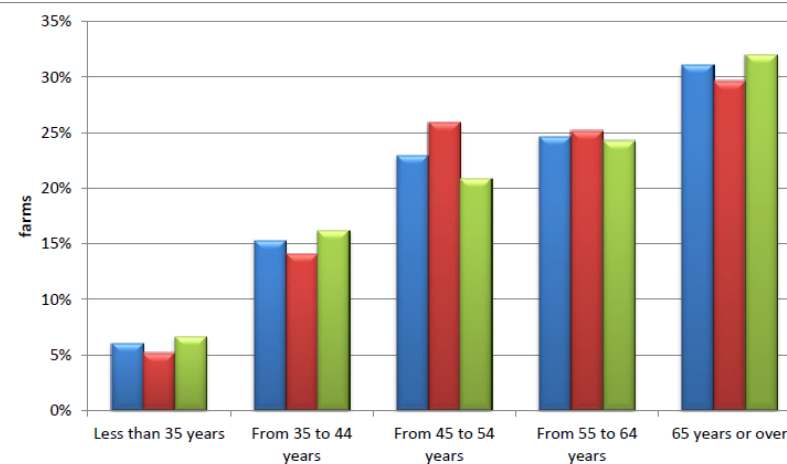
Access to infrastructure and services



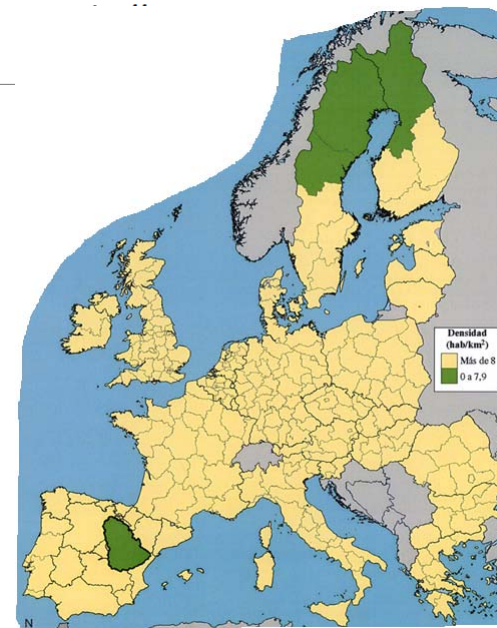
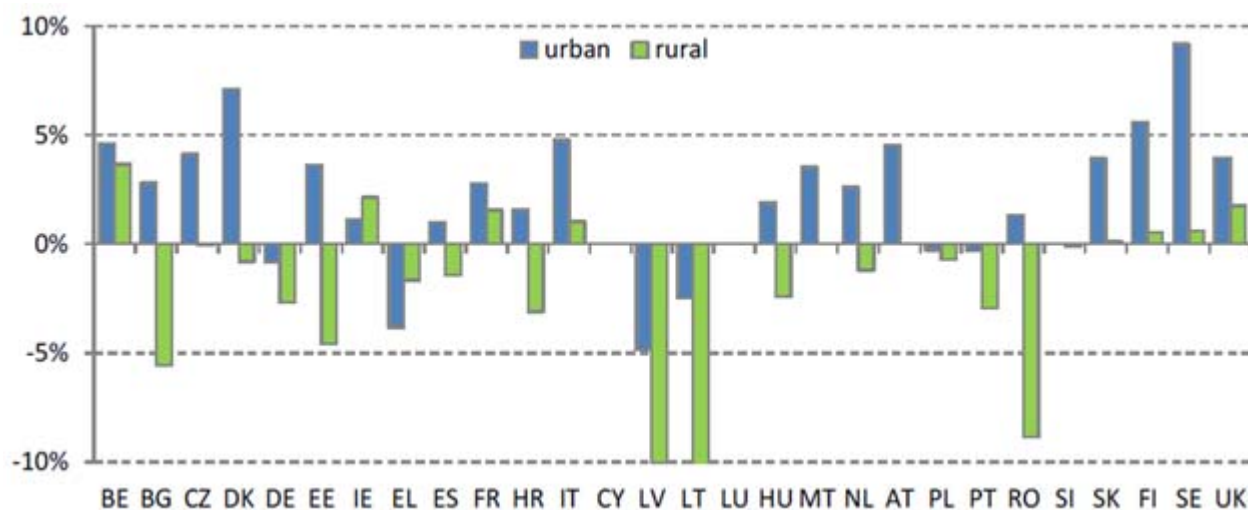
Some numbers



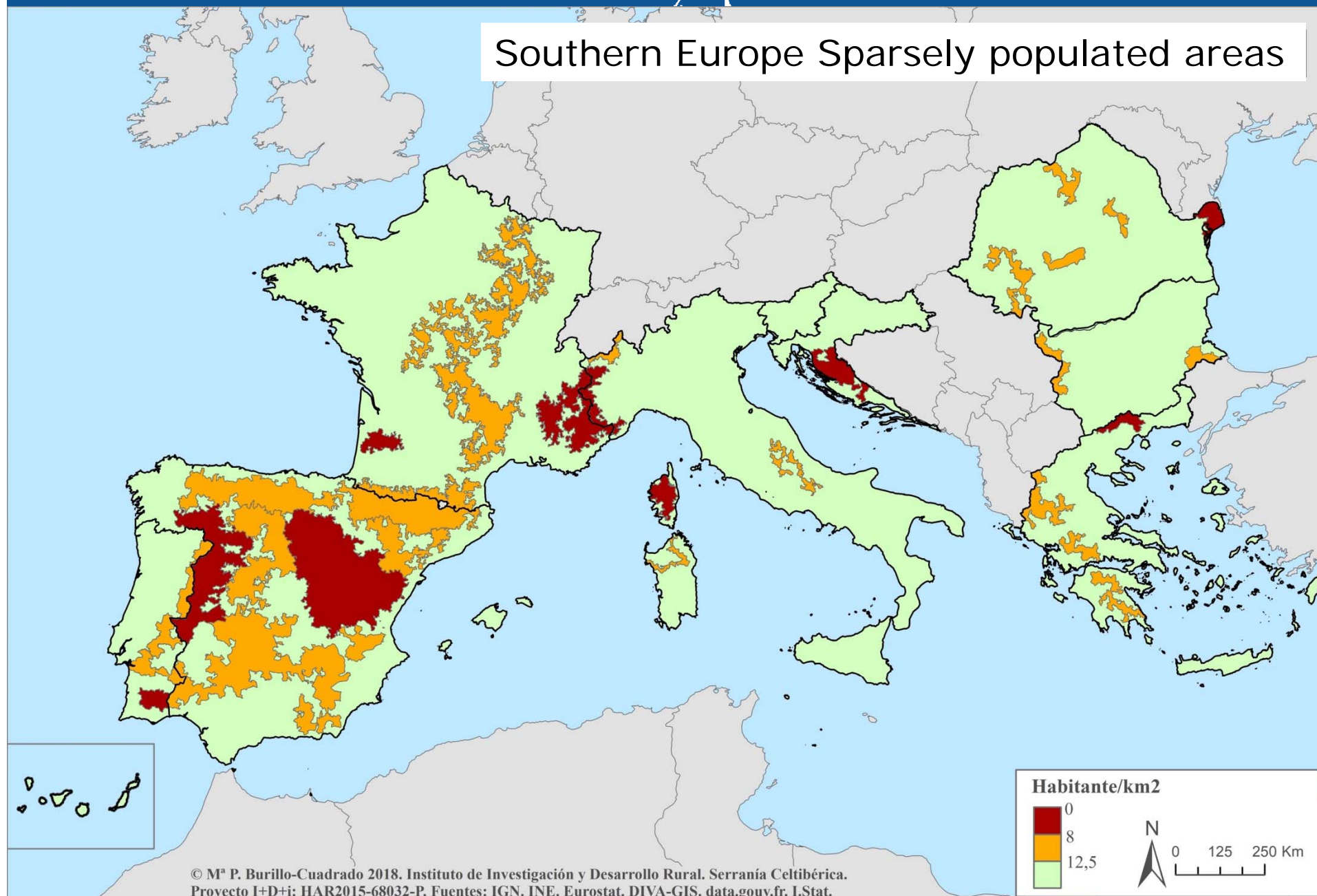
Share of farms by age group of manager (EU-27, 2013)



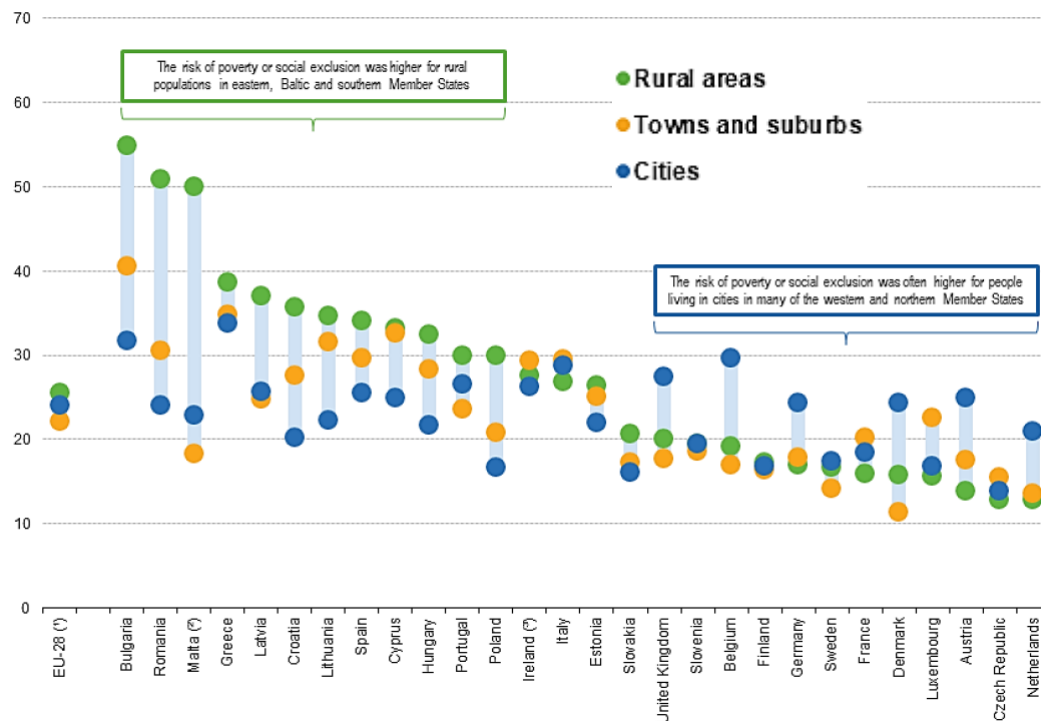
Changes from 2009 to 2014 in urban and rural populations



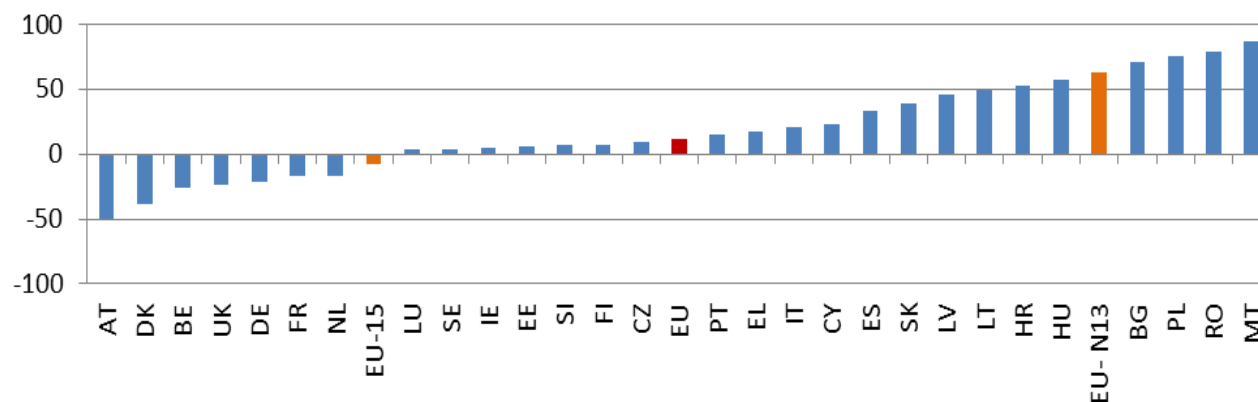
Southern Europe Sparsely populated areas



Some numbers



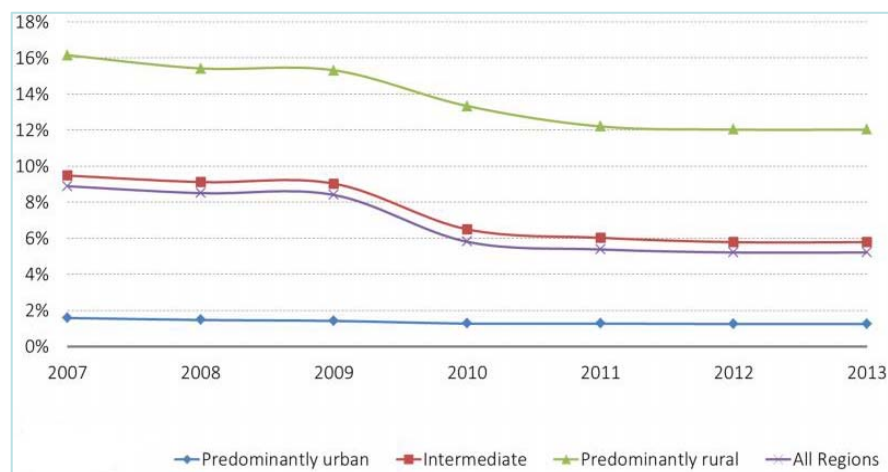
Ppoints difference in poverty rate rural vs cities



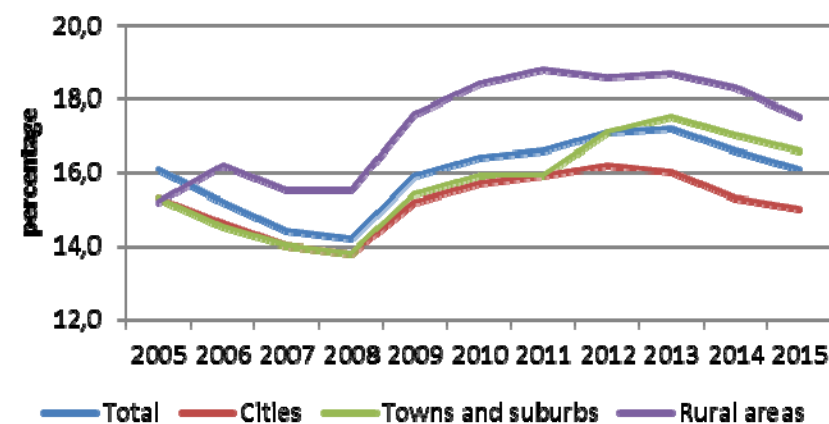
Some numbers



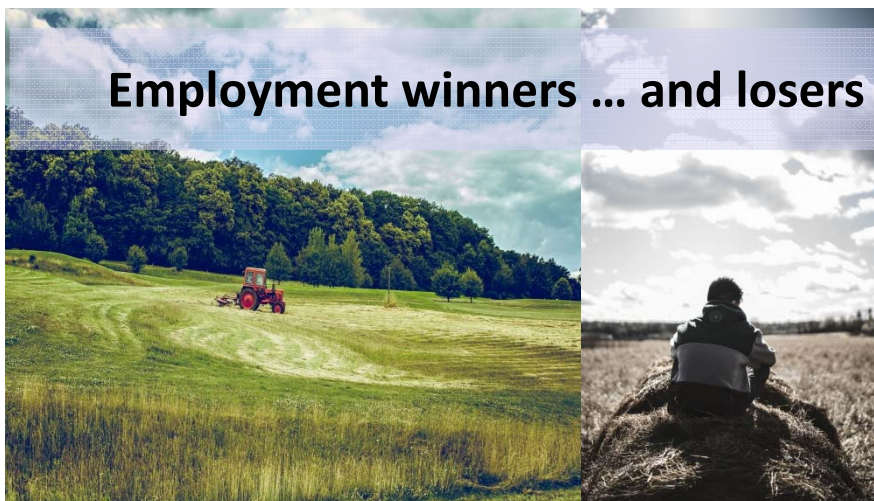
Share of employment in agriculture, forestry and fishing in EU-28
by type of region



Young people (15-34 years) neither in employment nor in
education and training (EU-28)



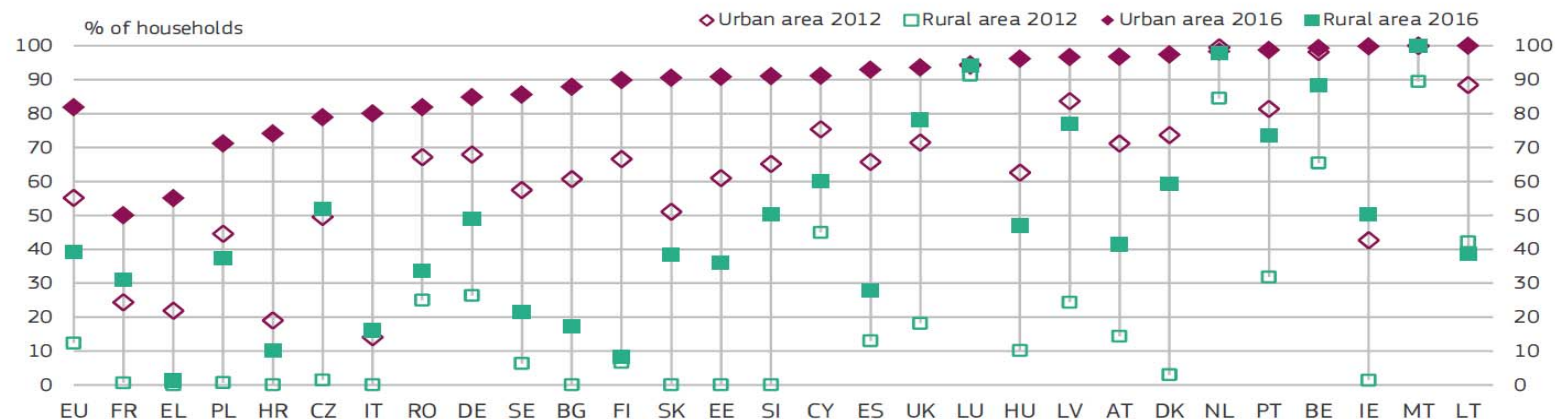
Employment winners ... and losers



Some numbers



Households with access to Next Generation Access (NGA) broadband by type of area, 2012 and 2016

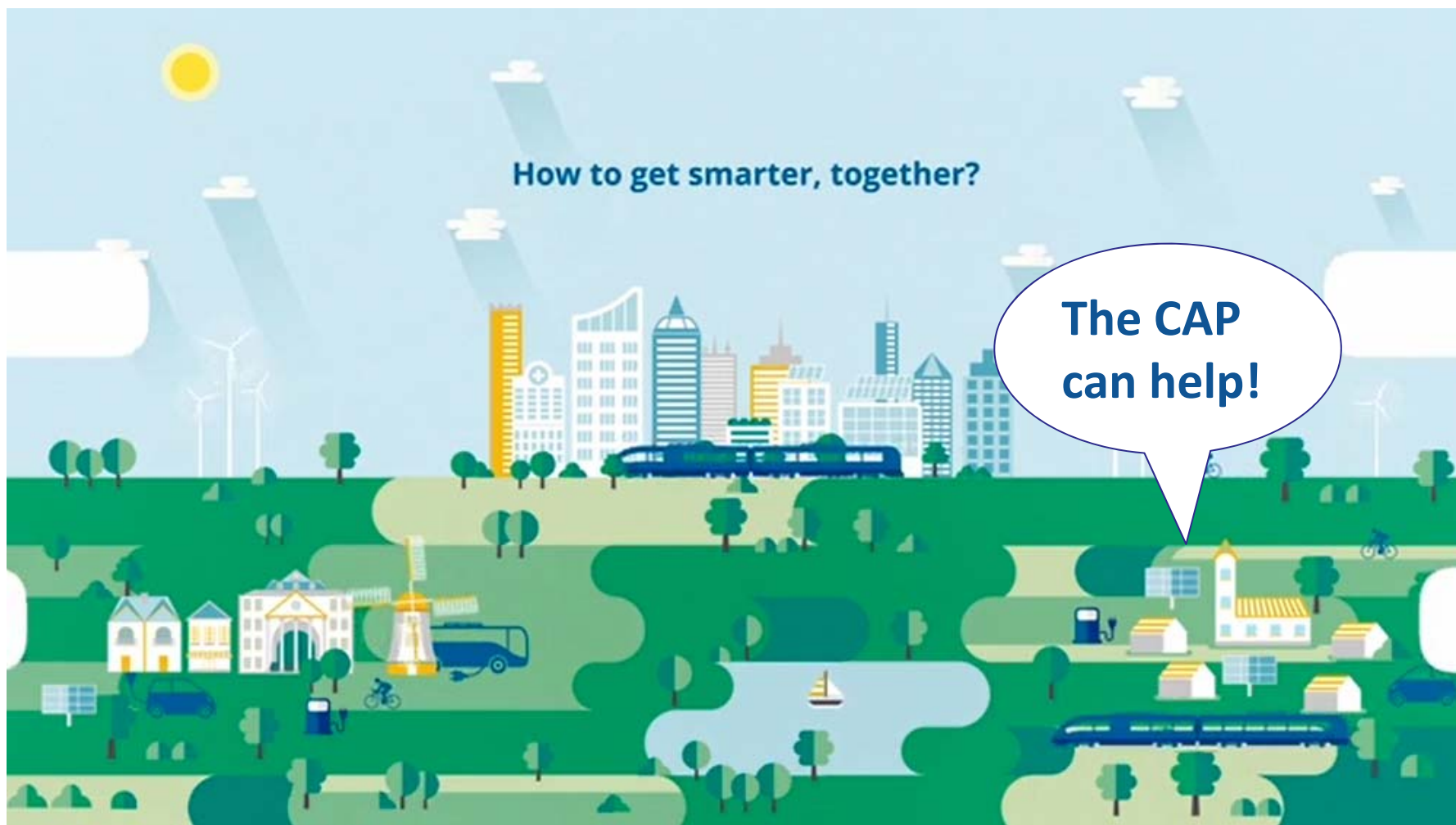


Data are for the end of 2012 and Jan-2016.
Source: European Commission (2016a)

**Access to infrastructure
and services**



Cities and villages...



INDEX

1. Bioeconomy ... and the wider picture
2. What about our rural areas?
3. Bioeconomy in the future CAP



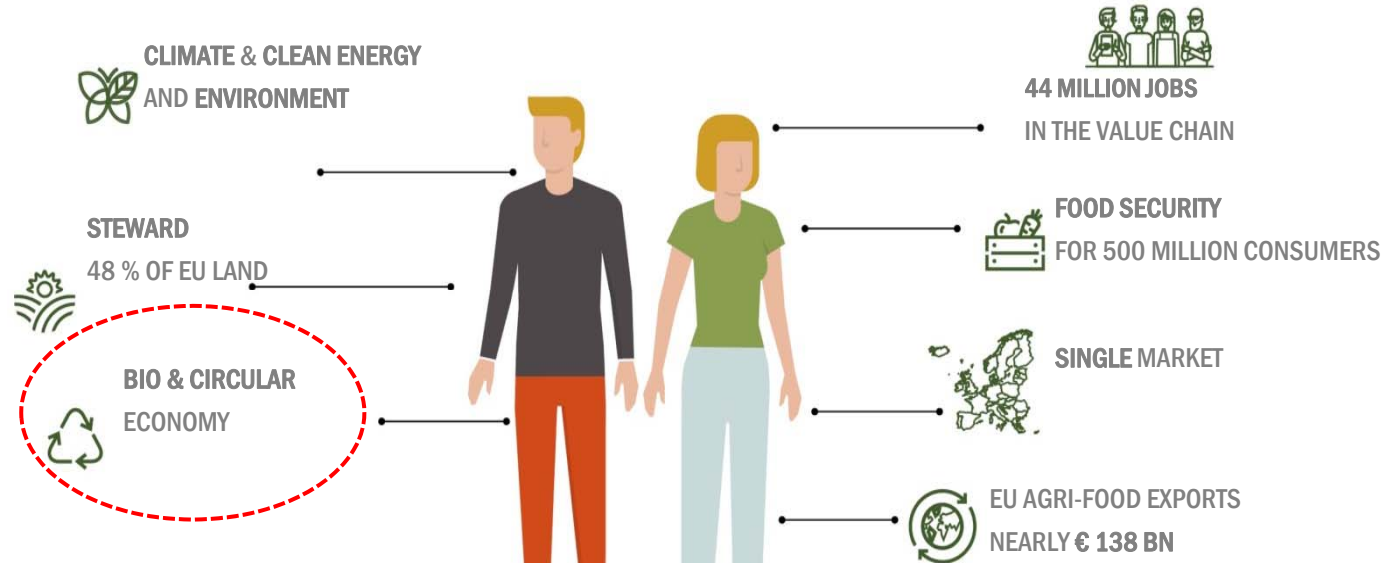
Common Agricultural Policy (CAP) post 2020



DELIVERING BENEFITS FOR EU CITIZENS

€365 Billion
for the period
2021-2027

EU
Agriculture



The CAP

Is a common policy framework at EU level allowing for adaptation to local conditions

Provides support for farm income and competitiveness, while fostering a sustainable agriculture

Supports the development of rural areas throughout the EU

Enables the functioning of the single market and to speak with one voice internationally

Bioeconomy in the CAP post 2020



- ✓ **Farmers and foresters are at the heart of Europe's rural communities.**
- ✓ **New rural value chains** such as the emerging bio-economy, the circular economy, clean energy, and ecotourism can offer **good growth and job potential** for rural areas.
- ✓ **Emerging sustainable rural value chains** offer opportunities for farmers and rural people to diversify their businesses, hedge risks and provide additional income - **the policy increasingly supports such efforts.**

Bioeconomy in the CAP post 2020



- ✓ The new CAP will encourage **increased investments in the developing bioeconomy**, which has enormous economic and job-creation potential.
- ✓ The **EFSI and other financial instruments** should leverage **additional support from Rural Development programmes** in order to provide low cost and longer term loans for entrepreneurs that are willing to invest in rural areas.



CAP and Horizon Europe working hand with hand



- ✓ A specific budget of **€10 billion** from **Horizon Europe** will be set aside for research and innovation in **food, agriculture, forestry, rural development and the bioeconomy**.
- ✓ The **agricultural European Innovation Partnership (EIP-AGRI)** will continue to pool funding sources from Horizon Europe and rural development to foster competitive and sustainable farming and forestry.

Common Agricultural Policy (CAP) post 2020



Art. 39 TFEU

General Objectives

- Foster a smart, resilient and diversified agricultural sector ensuring food security;
- Bolster environmental care and climate action and to contribute to the environmental- and climate-related objectives of the Union;
- Strengthen the socio-economic fabric of rural areas

Specific Objectives

Economic

- Support viable farm income and resilience across the Union to enhance food security
- Enhance market orientation and increase competitiveness, including greater focus on research, technology and digitalisation
- Improve the farmers' position in the value chain

Environment & Climate

- Contribute to climate change mitigation and adaptation, as well as sustainable energy
- Foster sustainable development and efficient management of natural resources e.g. water/soil/air
- Contribute to the protection of biodiversity, enhance ecosystem services and preserve habitats and landscapes

Social

- Attract young farmers and facilitate business development in rural areas;
- Promote employment, growth, social inclusion and local development in rural areas, including **bio-economy and sustainable forestry**;
- Improve the response of EU agriculture to societal demands on food and health, including safe, nutritious and sustainable food, food waste, as well as animal welfare

Cross-Cutting Objectives

Sustainability

Simplification

Modernisation

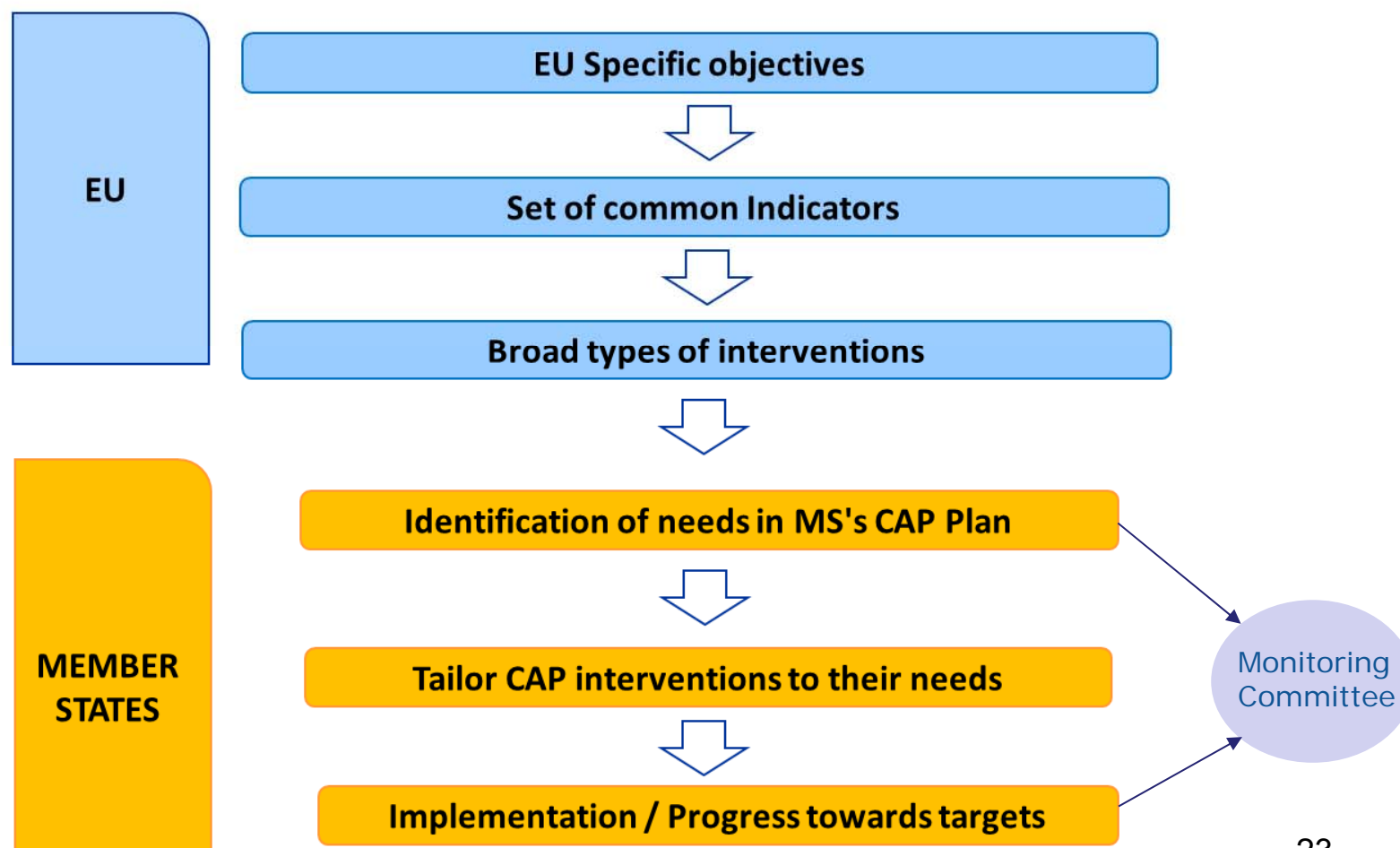
- Further improve sustainable development of farming, food and rural areas
- Ensure simplification and performance of CAP support
- Foster and share knowledge, innovation, digitalisation in agriculture and rural areas and encourage uptake

Common Agricultural Policy (CAP) post 2020





HOW: THE NEW DELIVERY MODEL OF THE CAP



© 2006 The Authors

24



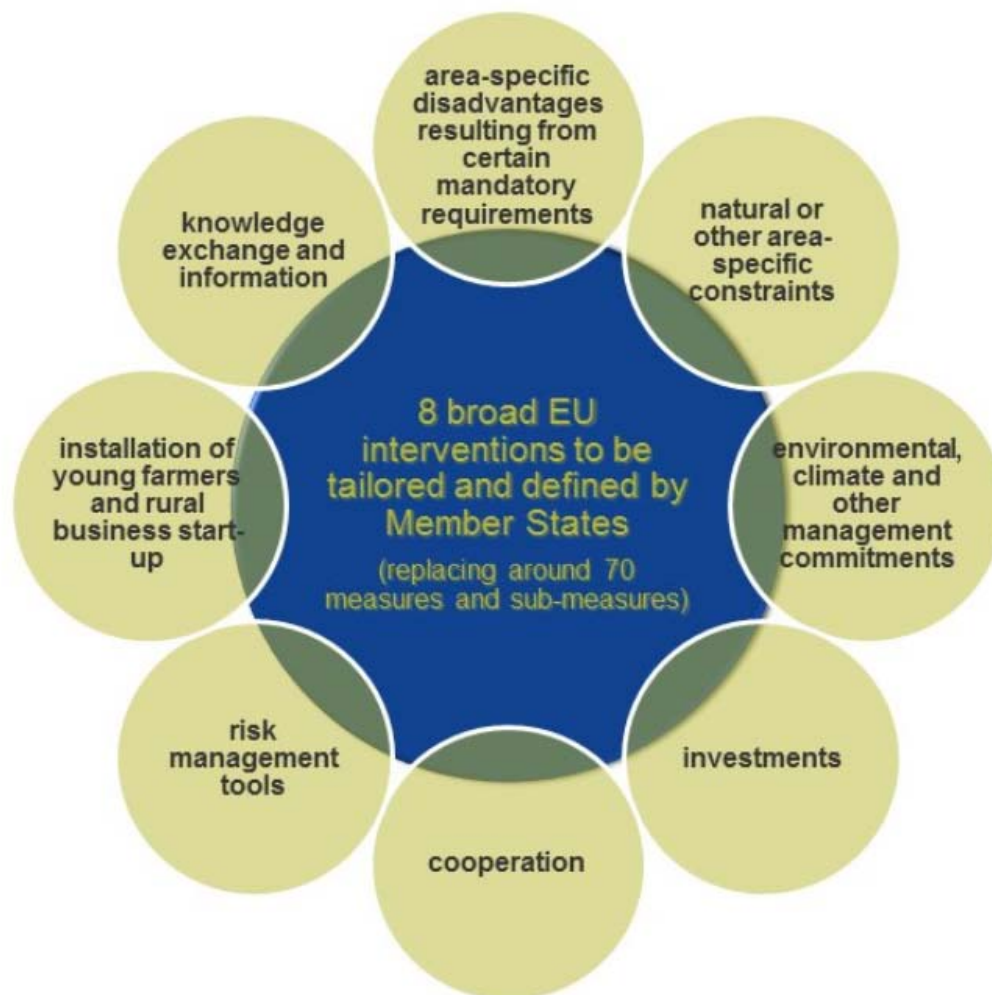
RURAL DEVELOPMENT



dream
Restaurant
MENU
- MEAT - FISH - VEGETABLES - FRUITS

NEW MENU!

- Meat
- Fish
- Vegetables
- Fruits



KEY FEATURES

Minimum budget ring-fencing of **total EAFRD** contribution:

- 30% for interventions addressing the three environmental/ climate objectives
- 5% for LEADER

Mandatory risk management tools and Risk Management Strategy

Easier to plan locally led schemes and result based schemes

Higher support rates for investment

Digitisation strategy to be included in the CAP plan

Possibility of using **financial instruments** (incl. working capital), also in combination with grants

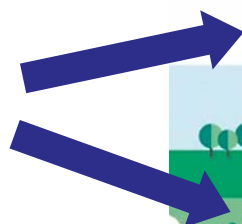
Increase of the **maximum amount of aid for the installation of young farmers** (up to EUR 100.000)

Simpler way of ensuring coherence with other EU funds

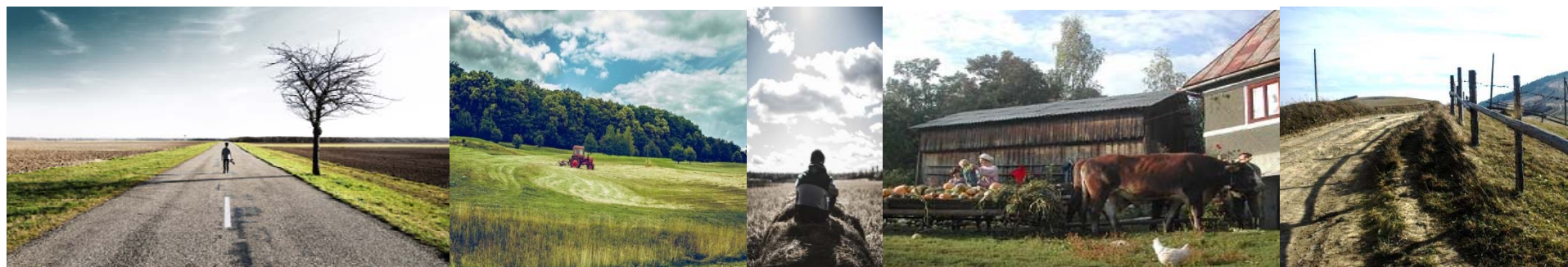
CONCLUDING REMARKS



Bioeconomy is
a way to create
solutions!



...but to develop its big potential in rural areas,
we should address the wider picture...





Muchas gracias por su atención!

Thank you for your attention!

Moltes gràcies per la seva atenció!

https://ec.europa.eu/agriculture/index_en.htm

